



SERVICE INFORMATION

Unitary Products
5005 York Drive
Norman, Oklahoma 73069
1/877-874-7378

Date: March 4, 2009

YS-005-09
Revision 2

To: All York Distributors
All York Branches
All Field Service Supervisors

Subject: Emerson Single Stage Furnace Control Boards – All Single Stage 33' & 40" Models
Control Board Part # (S1-03109166000/SAP#265901 & S1-03109167000/SAP# 265902)
Source 1 Kit Part # (S1-33109167000) (S1-37326083000) & (S1-43101972100)

We have received a few reports pertaining to the single stage control board used on the residential single stage gas furnaces. These reports state that in some cases the control board will show a rapid red flash. This has been reported on both single furnace installations as well as twinned applications. The problem, which is usually noted on initial start-up or within a short time after the furnace is put into operation, is due to a phasing check performed by the control board's software. It has been determined that this phasing check is very sensitive to improper grounding, reversed polarity, and "noise" on the incoming neutral line. This issue has been addressed by updating the control board's software which will eliminate the sensitivity to these electrical checks.

To date, all reports are limited to the Emerson single stage control boards Source 1 part numbers S1-03109166000/SAP#265901 & S1-03109167000/SAP# 265902; (**Source 1 kit number S1-33109167000, S1-37326083000 & S1-43101972100**). The new boards can be identified by the bold capital letter "R" following the date code located on the control board label. A bold, capital "R" will also be placed on the carton label along with a round green sticker to identify reworked repair parts inventory. See attachment for location of label and rework identifier, along with the location of the new carton label and rework indicator. **The new board will be implemented into production beginning the second week of March.**

For field installed units, this YS letter will provide a **fix on fail** replacement control board and a 1 hour labor credit at the dealer's registered DOA labor rate. **If you have not experienced the issue described above, it is not necessary to replace the board.**

If you have experienced this issue in your area, this YS letter will allow for replacement of the control board for furnaces in distributor inventory. The control board and a fair and reasonable allowance for their installation will be provided. Contact Mark Freund at 405-419-6609 for prior authorization to submit the billing for reworking your inventory.

For repair parts in distributor inventory, contact your Source 1 account representative for a Return Authorization of modules which do not contain the rework identification. **Source 1 will have a limited quantity of new boards available for shipment beginning the week of February 23, 2009.**

We apologize in advance for any inconvenience that this situation may have caused you or your dealers.

Mark Freund

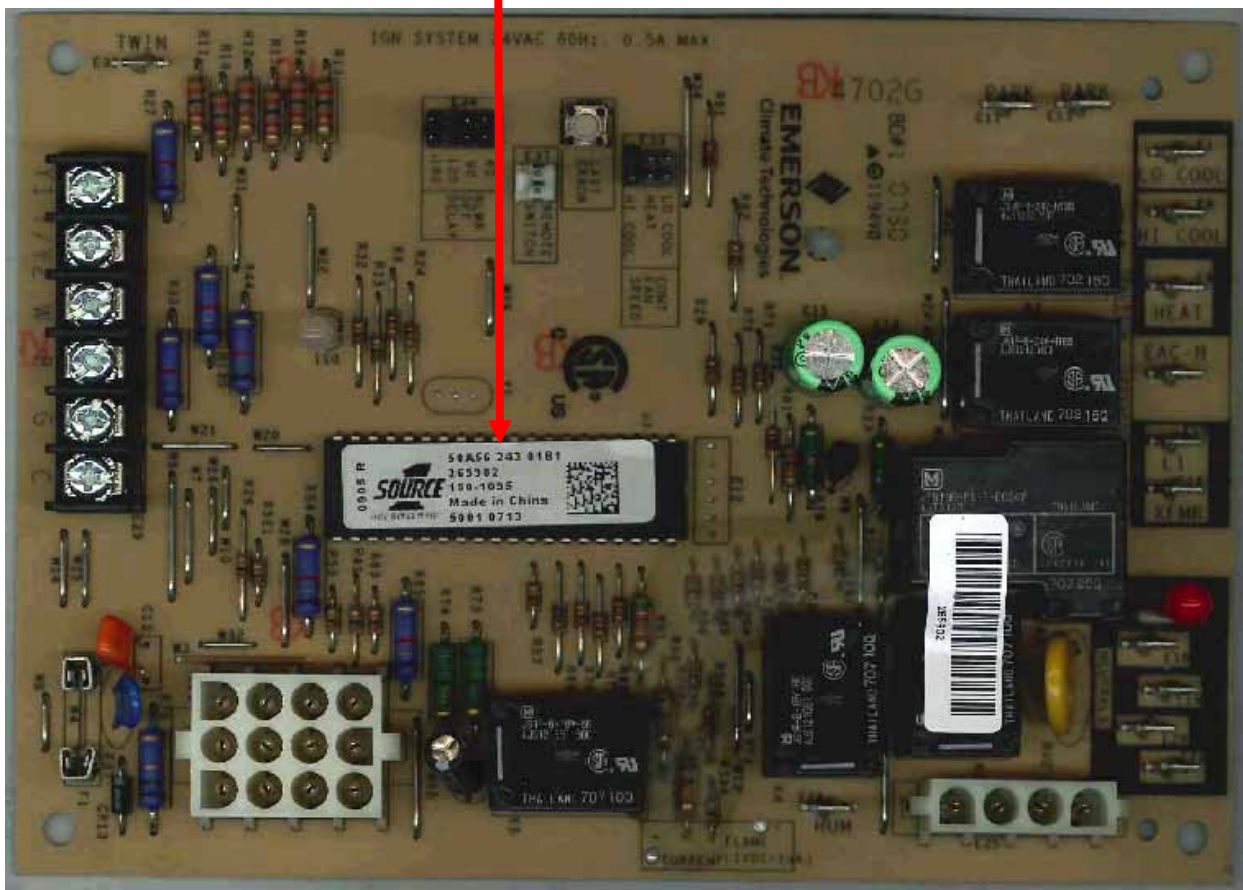
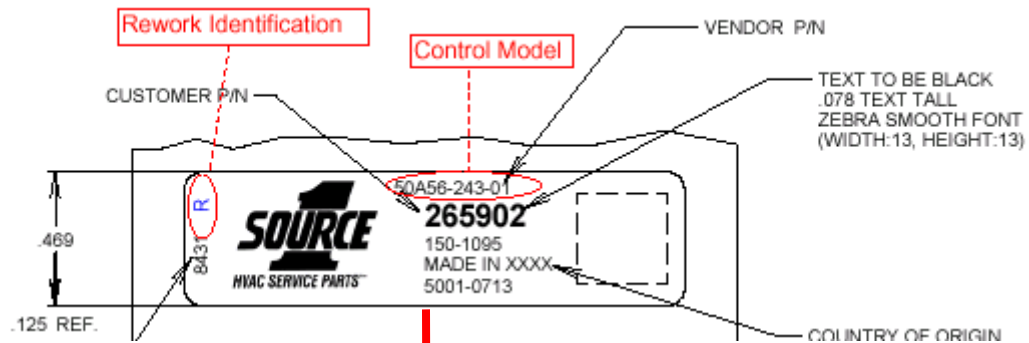
Robert Cabrera

Mark Freund
Manager, Residential Field Service

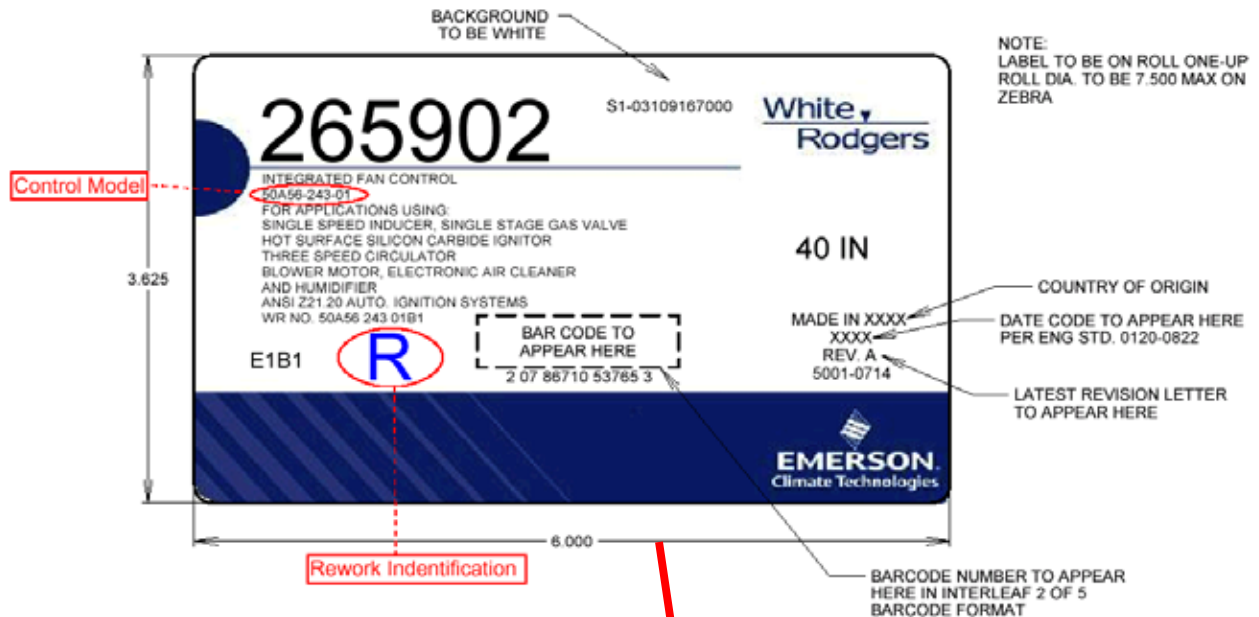
Robert Cabrera
Director, Indoor Products Engineering

York 50A56-243 Rework Labeling Procedure

- 1) The new label will be marked with model number 50A56-243-01 and an “R” following the date code to identify it as a reworked control.



For repair parts, a “Green Circle” sticker on the carton, along with the bold capital “R” on the carton sticker will be a visual indication that the control in the carton was reworked.



Rework indication

